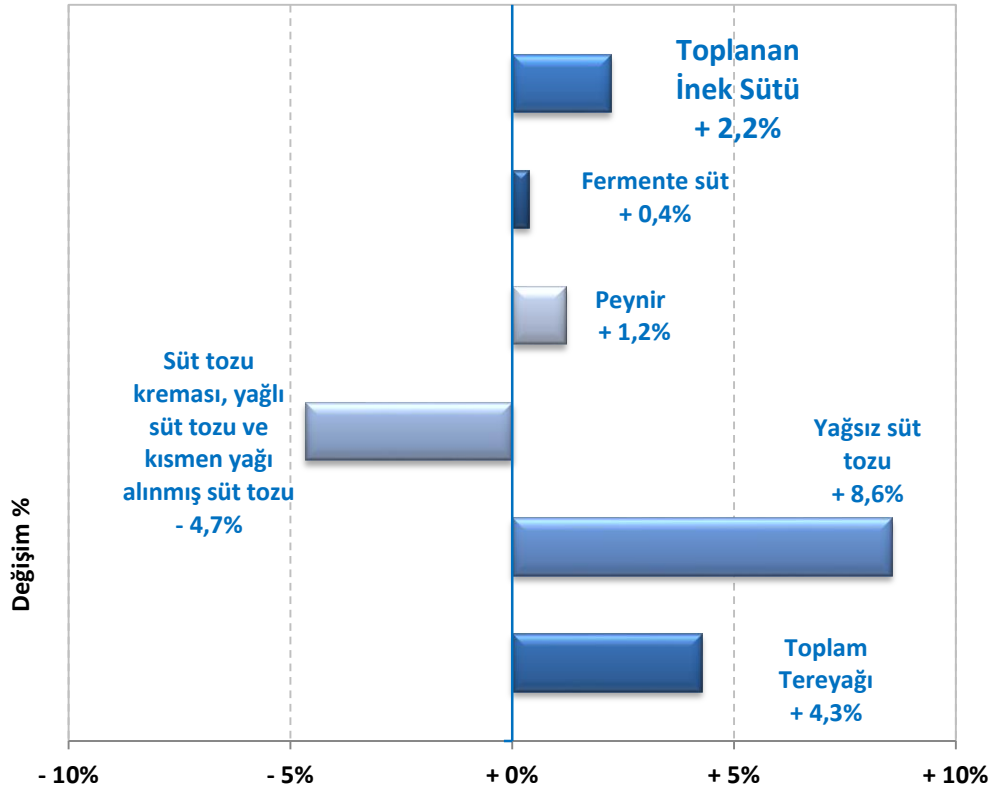


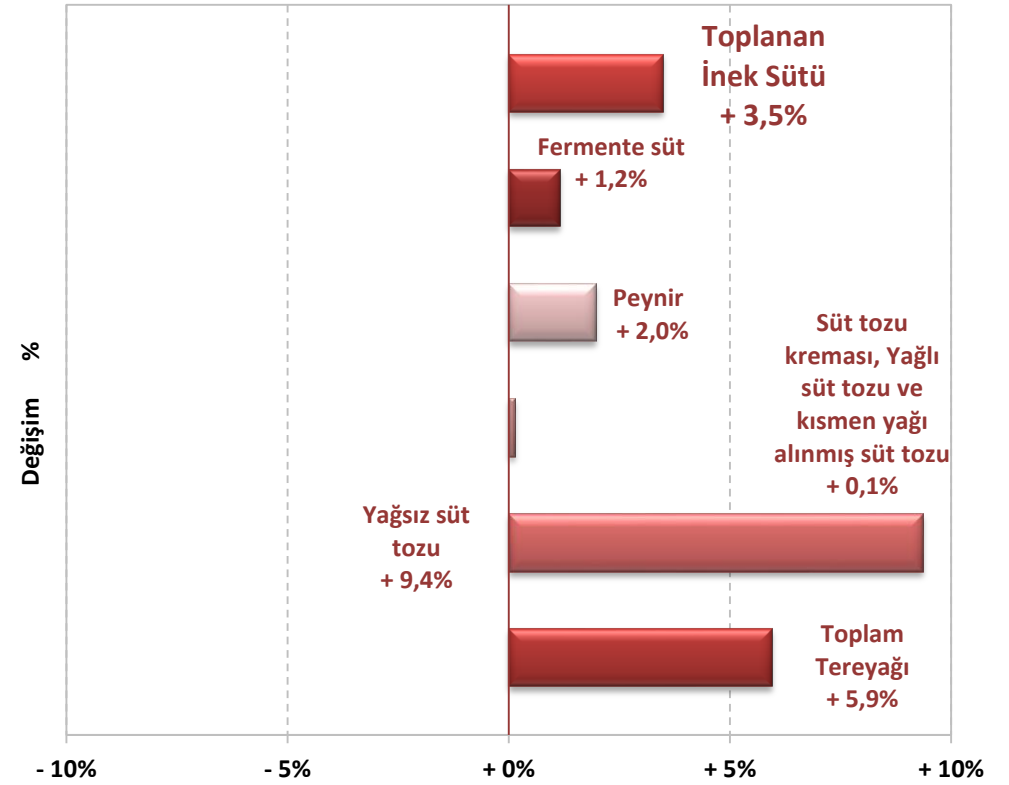
**AB-28 Temin/Üretim Gelişimi**  
(Ocak-Kasım 2015, Ocak-Kasım 2014'le karşılaştırıldığında)



Rem : ES/IT milk deliveries estimated

*Kaynak : MS' Communications to Eurostat, and, for milk : AGEA, FEGA, Reg. 479/2010.Art1(a)1*

**AB-28 Temin/Üretim Gelişimi**  
(Nisan - Kasım 2015, Nisan-Kasım 2014'le karşılaştırıldığında)

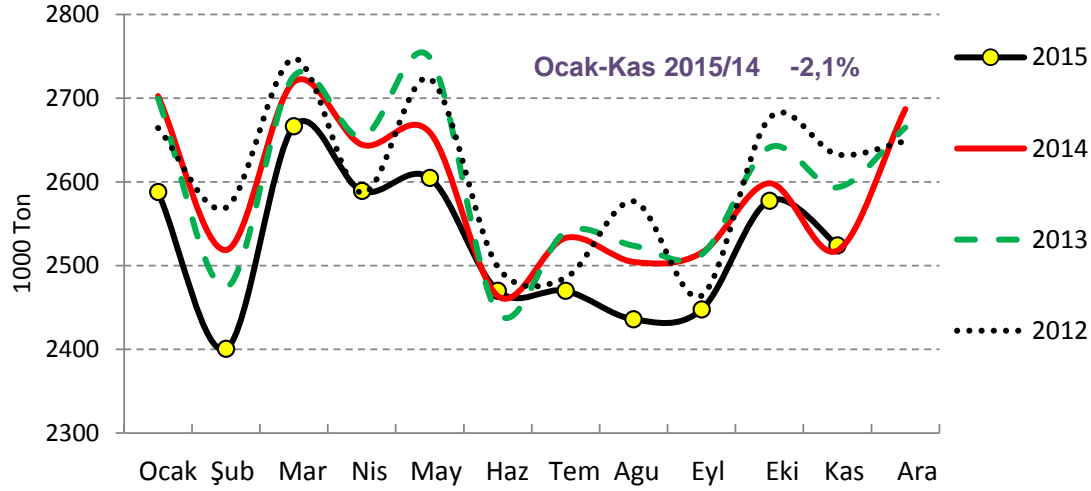


Rem : ES/IT milk deliveries estimated

*Kaynak : MS' Communications to Eurostat, and, for milk : AGEA, FEGA Reg.479/2010.Art1(a)1*

# ANA SÜT ÜRÜNLERİ ÜRETİMİ (1/2)

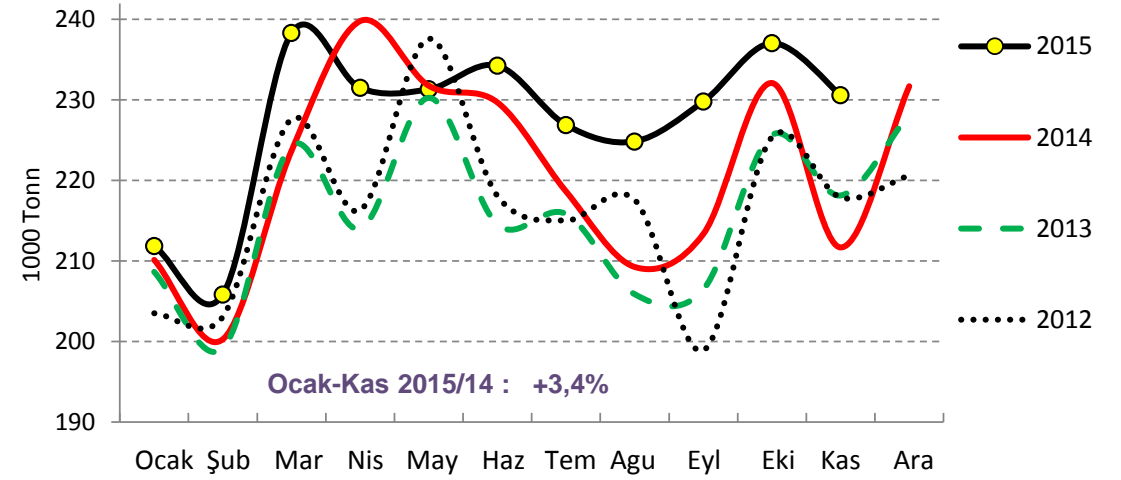
## AB - İçme Sütü



Kaynak : Estat - Newcronos

Güncelleme:Ocak-Kas

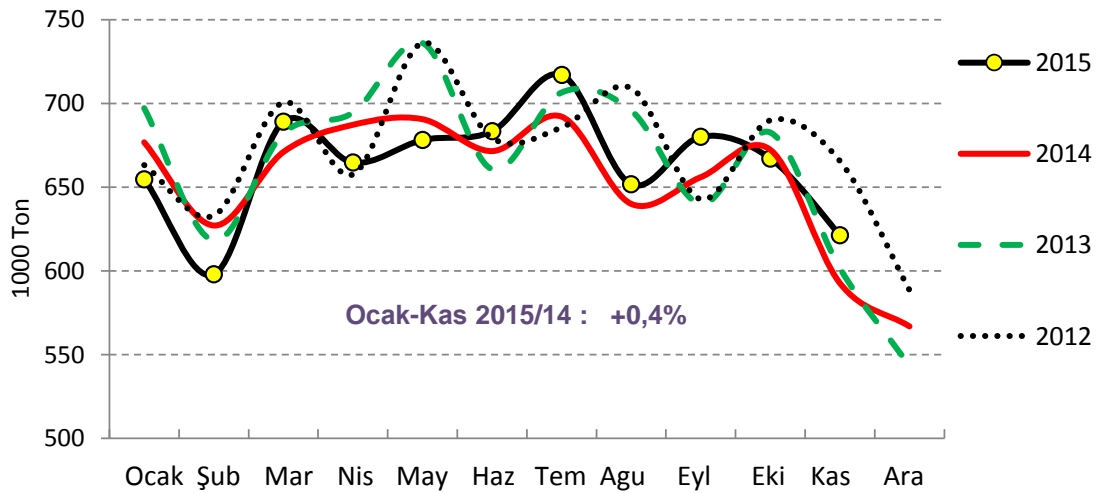
## AB - Doğrudan Tüketim için Krema



Kaynak : Estat - Newcronos

Güncelleme:Ocak-Kas

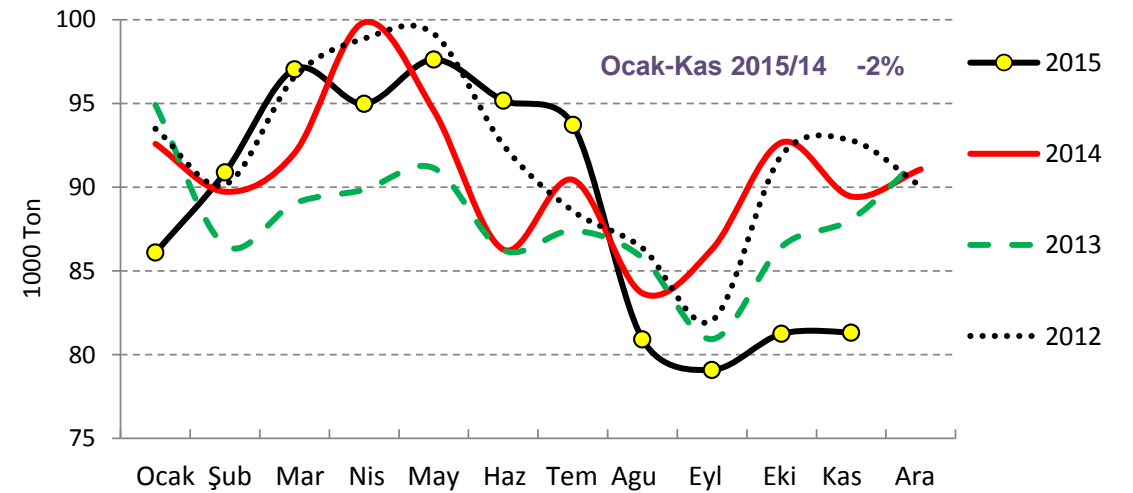
## AB - Asitlendirilmiş Süt



Kaynak : Estat - Newcronos

Güncelleme:Ocak-Kas

## AB - Konsantre Süt

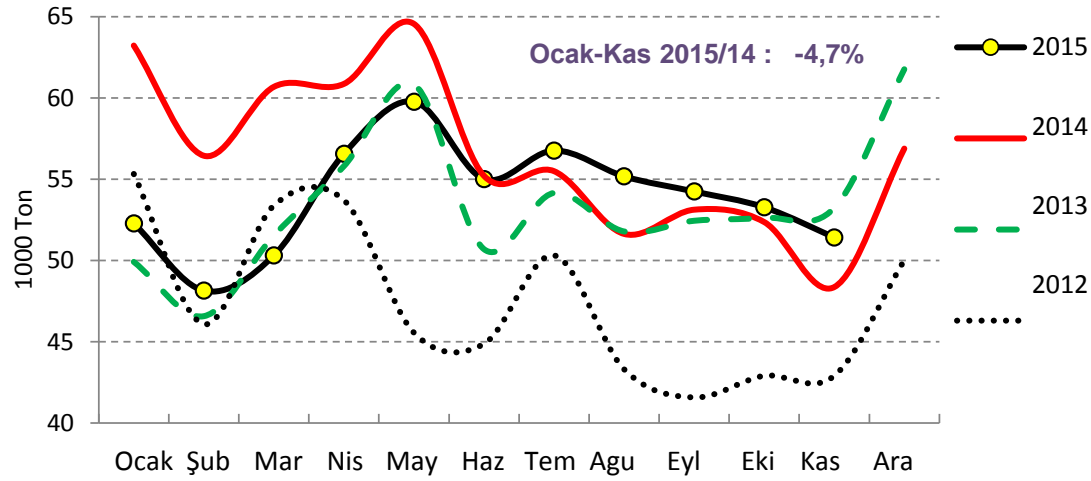


Kaynak : Estat - Newcronos

Güncelleme:Ocak-Kas

## ANA SÜT ÜRÜNLERİ ÜRETİMİ (2/2)

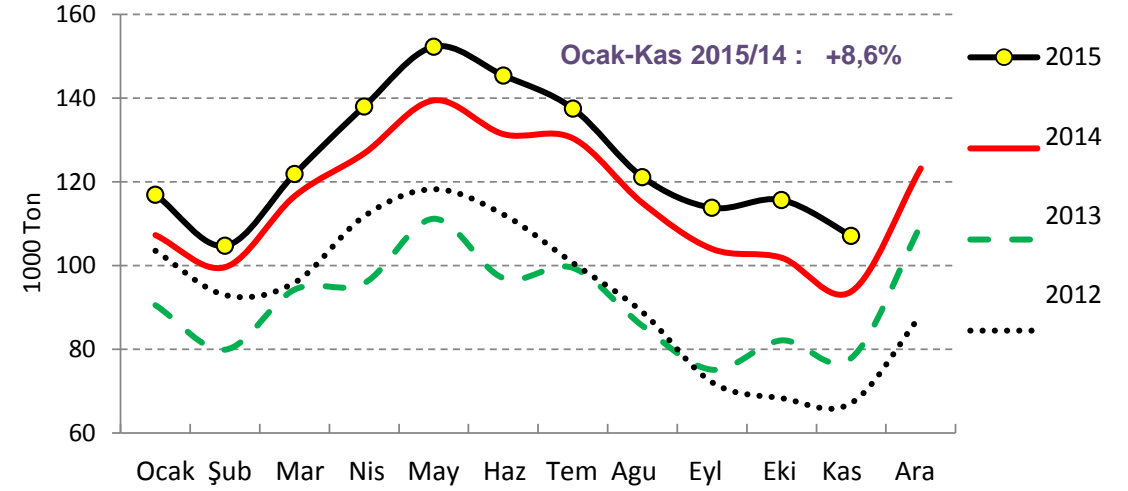
**AB - Süt tozu kreması, yağlı süt tozu ve kısmen yağlı alınmış süt tozu**



Kaynak : Estat - Newcronos

Güncelleme: Ocak-Kas

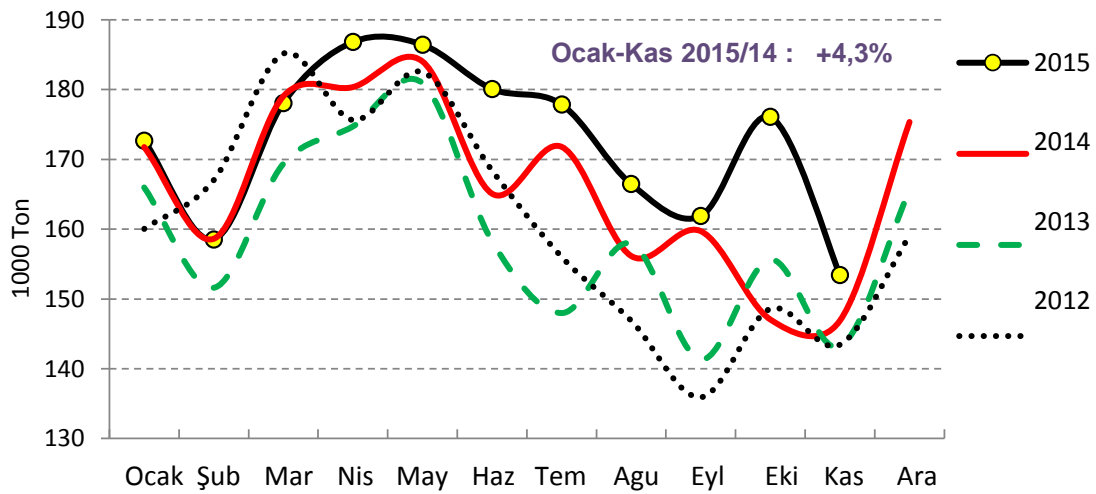
**AB - Yağsız Süt Tozu**



Kaynak : Estat - Newcronos

Güncelleme: Ocak-Kas

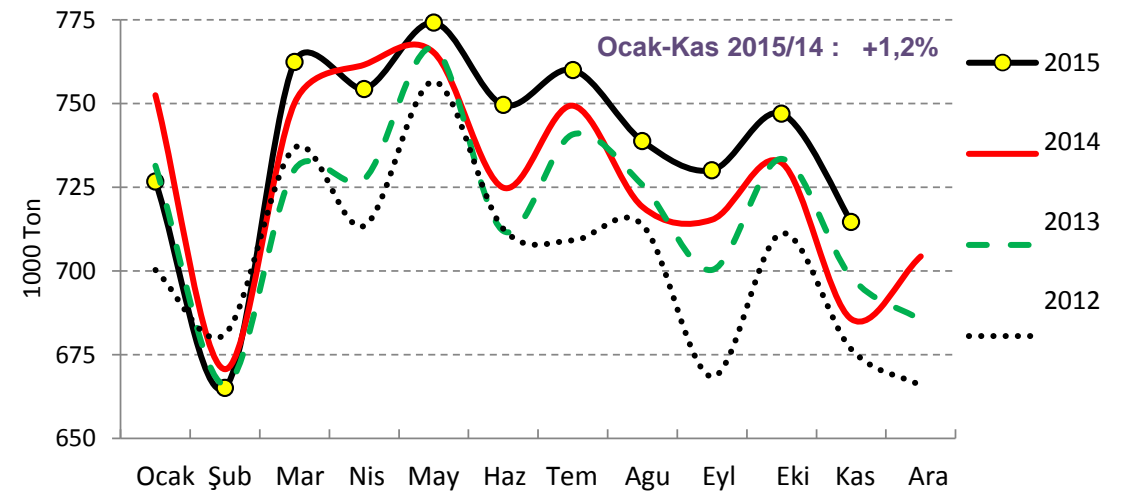
**AB - Tereyağı**



Kaynak : Estat - Newcronos

Güncelleme: Ocak-Kas

**AB - Peynir**



Kaynak : Estat - Newcronos

Güncelleme: Ocak-Kas